


# WIDELY DISTRIBUTED RED ALGAE OFTEN REPRESENT HIDDEN INTRODUCTIONS, COMPLEXES OF CRYPTIC SPECIES OR SPECIES WITH STRONG PHYLOGEOGRAPHIC STRUCTURE<sup>1</sup>

Pilar Díaz-Tapia<sup>2</sup> 

Coastal Biology Research Group, Faculty of Sciences and Centre for Advanced Scientific Research (CICA), University of A Coruña  
15071, A Coruña, Spain

School of BioSciences, University of Melbourne, Melbourne, Victoria 3010, Australia

Christine A. Maggs 

Portaferry Marine Laboratory, Queen's University Belfast, Belfast BT22 1PF, UK

Erasmio C. Macaya

Laboratorio de Estudios Algales (ALGALAB), Departamento de Oceanografía, Facultad de Ciencias Naturales y Oceanográficas,  
Universidad de Concepción, Concepción, Chile

Millennium Nucleus Ecology and Sustainable Management of Oceanic Island (ESMOI), Larrondo, 1281, Coquimbo, Chile  
Centro FONDAF de Investigaciones en Dinámica de Ecosistemas Marinos de Altas Latitudes (IDEAL), Valdivia, Chile

and Heroen Verbruggen 

School of BioSciences, University of Melbourne, Melbourne, Victoria 3010, Australia

Despite studies suggesting that most seaweeds are poor dispersers, many red algal species are reported to have circumglobal distributions. Such distributions have mostly been based on morphological identifications, but molecular data have revealed a range of issues with morphologically defined species boundaries. Consequently, the real distribution of such reportedly circumglobal species must be questioned. In this study, we analyzed molecular data sets (*rbcL* gene) of nine species in the Rhodomelaceae for which samples were available from widely spaced geographical locations. Three overall patterns were identified: (i) species showing strong phylogeographic structure (i.e., phylogenetic similarity correlates with geographical provenance), often to the point that populations from different locations could be considered as different species (*Lophosiphonia obscura*, *Ophidocladus simpliciusculus*, *Polysiphonia villum*, and *Xiphosiphonia pinnulata*); (ii) species with a broad distribution that is explained, in part, by putative human-mediated transport (*Symphocladia dendroidea* and *Polysiphonia devoniensis*); and (iii) non-monophyletic complexes of cryptic species, most with a more restricted distribution than previously thought (*Herposiphonia tenella*, *Symphocladia dendroidea*, and the *Xiphosiphonia pennata* complex that includes the species *Xiphosiphonia pinnulata* and *Symphocladia*

*spinifera*). This study shows that widely distributed species are the exception in marine red algae, unless they have been spread by humans.

**Key index words:** Herposiphoniaeae; introductions; new record; phylogeography; Polysiphoniaeae; Pterosiphoniaeae; *rbcL*; Rhodomelaceae; species boundaries; species complexes

---

Phylogeography of marine organisms is influenced by barriers to dispersal and geographical distance, as well as by aspects of their life-history, physiology and ecology (Jackson 1974, Palumbi 1994, Riginos et al. 2011). The dispersal ability of seaweeds is generally very limited, of the order of tens of meters or less (Santelices 1990, Kinlan and Gaines 2003, Destombe et al. 2009). However, long-distance dispersal is known in brown seaweeds with buoyant structures (Fraser et al. 2009, Macaya and Zuccarello 2010), which can act as rafts promoting in turn the dispersal of the epiphytic species that they host (Fraser et al. 2013, Macaya et al. 2016, López et al. 2017, 2018). Still, a large proportion of macroalgae are epilithic, so their expected dispersal ability is very limited and consequently their distribution range is expected to be relatively small. Paradoxically, many macroalgal species are reported to be very widely or even globally distributed.

Records are usually based only on morphological identification, which can be inaccurate due to morphological plasticity within species as well as

<sup>1</sup>Received 7 April 2018. Accepted 8 August 2018. First Published Online 23 August 2018. Published Online 19 September 2018, Wiley Online Library (wileyonlinelibrary.com).

<sup>2</sup>Author for correspondence: e-mail pdiaz@udc.es.  
Editorial Responsibility: K. Müller (Associate Editor)

similarity between cryptic species (e.g., Verbruggen 2014, Schneider et al. 2017). Closer investigation of material from distant regions using DNA data commonly leads to the discovery of cryptic species (e.g., Won et al. 2009, Bustamante et al. 2014, Schneider et al. 2017). Even though studies combining morphological and molecular data are increasing, DNA databases are still very limited for most algal groups and molecular data are often available only for some regions. As a consequence, the true distribution of many seaweed species should be regarded as uncertain. Few studies have reassessed the distribution of widely reported red algal species using molecular data from a broad sampling area. Complexes of look-alike species, as well as widely distributed species, have been detected (Zuccarello et al. 1999, 2002a, Zuccarello and West 2003, Won et al. 2009). Among the widely distributed species, some exhibit high genetic variability and strong phylogeographic structure that often distinguishes populations from different basins (Zuccarello et al. 2002a,b, Won et al. 2009). Other widely distributed species lack phylogeographic signal, suggesting long-distance dispersal processes by unknown mechanisms (Zuccarello et al. 2002a, Fraser et al. 2013). Therefore, red algal phylogeographic patterns are highly heterogeneous and depend on evolutionary histories and dispersal abilities.

In addition to natural dispersal mechanisms, human-mediated vectors can transport seaweeds from native areas to other world regions and rapidly alter distribution patterns (Straub et al. 2016). More than 200 red algal species have been considered as introduced or cryptogenic in one or several regions (Thomsen et al. 2016). Cryptic introductions are common in the red algae and non-native species often remain unnoticed until diversity surveys use molecular tools (McIvor et al. 2001, Zuccarello et al. 2002b, Díaz-Tapia et al. 2013b, 2017a). Considering the low dispersal ability of non-buoyant epilithic red algae, we hypothesize that the distribution of most truly cosmopolitan species can be explained by human-mediated transport – which is frequently provided as a potential explanation for wide distributions of species (Zuccarello et al. 2002a,b, Fraser et al. 2013).

The Rhodomelaceae, with >1,000 recognized species, is the most diverse red algal family (Guiry and Guiry 2018). It includes numerous examples of widely reported species and, as in most red algal groups, cryptic diversity is common (e.g., Zuccarello et al. 2002a, 2018, Díaz-Tapia and Bárbara 2013, Bustamante et al. 2014, Savoie and Saunders 2016). Among the red algae the Rhodomelaceae accounts for the largest number of introduced species (Williams and Smith 2007). Members of this family are often major components of algal turfs where canopy-forming brown algae with buoyant structures are rare as a consequence of the stressful conditions imposed by the presence of sediment

(Airoldi 1998, Díaz-Tapia et al. 2013a). This makes the family a good candidate to test hypotheses about species distributions and phylogeographic patterns.

The objective of this paper is to reassess the wide reported distributions of nine turf-forming species of the family Rhodomelaceae using DNA sequences. Using molecular data from distant locations within each species' reported distribution range, we evaluate whether these are indeed widely distributed species, analyze the observed phylogeographic patterns, and consider whether these species may have been introduced into one or several regions by human activities.

#### MATERIALS AND METHODS

Material of *Herposiphonia tenella*, *Lophosiphonia obscura*, *Ophiodocladus simpliciusculus*, *Polysiphonia villum*, *P. devoniensis*, *Symphocladia spinifera*, *S. dendroidea*, *Xiphosiphonia pennata*, and *X. pinnulata* was collected in Norway, United Kingdom, France, Spain, Portugal, Italy, Brazil, Chile, Australia, and South Africa during general sampling surveys of the family Rhodomelaceae (Table S1 in the Supporting Information). All these species form epilithic turfs, most of them on intertidal sand-covered rocks (Womersley 2003, Díaz-Tapia and Bárbara 2013). *Lophosiphonia obscura* was found in North Atlantic brackish water coastal lagoons or estuaries, and *S. dendroidea* was collected in Australian and Chilean shallow subtidal turfs. Distribution maps of records for these species (Figs. 1–3, lines) were drawn up based on information available in AlgaeBase and references therein (Guiry and Guiry 2018).

DNA was extracted from silica gel-dried material following Saunders and McDevit (2012), using the Qiagen DNeasy Plant Mini Kit (Qiagen GmbH, Hilden, Germany) or the Promega Wizard Magnetic 96 DNA Plant System kit (Promega Corporation, Madison, WI, USA), following the manufacturer's instructions. PCR amplification was carried out for the *rbcL* gene using primers F7/RbcStart, F7/R893 or F57/rbcLrevNEW (Freshwater and Rueness 1994, Mamoozadeh and Freshwater 2011, Saunders and Moore 2013), as well as the newly designed primers F2 (TGTCTAACTCTGTAGAA CAACGGA), F8 (ACTCTGTAGAASAACGGACAMG), R1008 (AACTACTACAGTACCAGCATG), R1464 (AACAT TAGCTGTTGGAGTTTCYAC) and R1452 (TGGAGTTTCYA CRAAGTCAGCTGT). Names of these primers indicate their position in the *rbcL* gene (e.g., first base of F2 primer corresponds with the second base of the *rbcL* gene). PCR reactions were performed in a total volume of 25 µL containing 1× MyTaq™ reaction buffer, 0.28 µM forward and reverse primers, 0.125 units My Taq™ DNA Polymerase (Bioline, London, UK) and 1 µL template DNA. The PCR profile consisted of initial denaturation (93°C for 3 min), 35 cycles of denaturation (94°C for 30 s), primer annealing (45°C for 30 s), and extension (74°C for 90 s) and final extension (74°C for 5 min). The PCR products were purified and sequenced at Queen's University of Belfast on an AB3730xl DNA Analyzer (Applied Biosystems, Foster City, CA, USA) or commercially by Macrogen or the sequencing service of the University of A Coruña.

A total of 128 new *rbcL* sequences were generated in this study and an additional 91 sequences were downloaded from GenBank (Table S1). Length of sequences ranged from 585 to 1,467 (Table S1). Sequences were aligned using MUSCLE in Geneious 6.1.8 (Kearse et al. 2012). As a first stage, we analyzed these sequences in taxon-rich data sets for the tribes

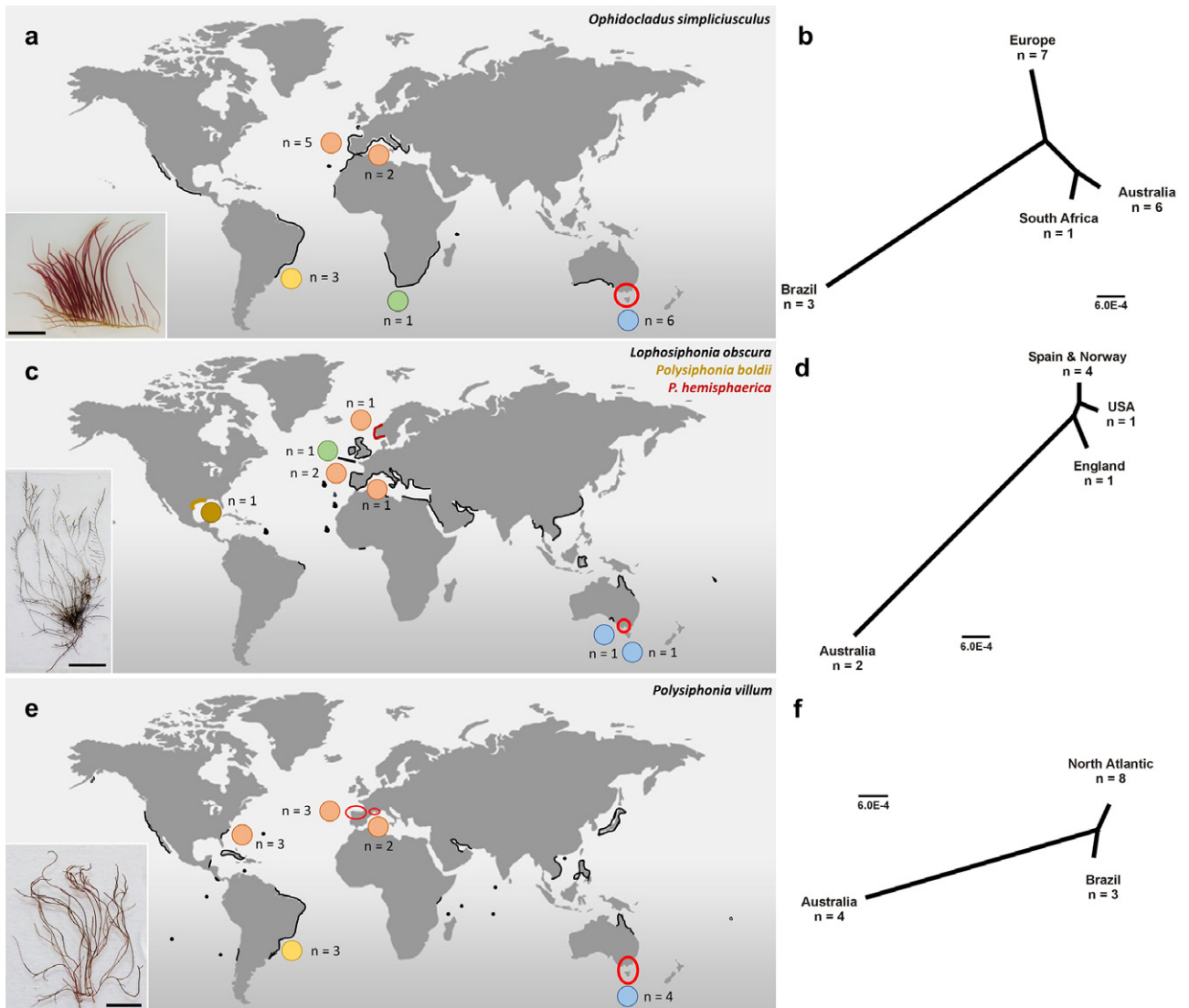


FIG. 1. Distribution and UPGMA unrooted distance phylogram based on *rbcL* sequences of (a, b) *Ophidocladus simpliciusculus*, (c, d) *Lophosiphonia obscura* (as *Polysiphonia hemisphaerica* and *P. boldii* in Norway and Texas, respectively, see Appendix S1), and (e, f) *Polysiphonia villum*. In panels a, c and e, circles indicate the regions from which sequences are available and their colors indicate the distribution of haplotypes. Areas outlined in red are regions where the species is recorded for the first time. Coastline in black shows the reported distribution (Guiry and Guiry 2018). (c) Black coastlines represent the recorded distribution of *L. obscura*, red line *P. hemisphaerica* and yellow line *P. boldii*. Scale bars: 5 mm in (a), 8 mm in (c), 6 mm in (e).

Herposiphonieae, Pterosiphonieae, Polysiphonieae, and Streblocladiae to verify that the target species were monophyletic. Based on the resulting trees, we selected all sequences corresponding to the species (or group of closely related species) that are the focus of this paper. These data sets were analyzed species by species using the unweighted pair group method with arithmetic mean (UPGMA). For two complexes of non-sister species in our initial taxon-rich trees (*Symphycloadia dendroidea* and *Herposiphonia tenella*), we included wider species sampling considering the available data for the respective genera (Table S1). We performed maximum likelihood (ML) analyses separately for each of the two genera using RAXML 8.1.X (Stamatakis 2014). GTR-Gamma was used as the nucleotide model and branch support was estimated with 1,000 bootstrap replicates. Three species of *Xiphosiphonia* and *Dipterosiphonia* were selected as the respective outgroups for the *Symphycloadia* and *Herposiphonia*

trees based on our phylogenomic analyses of the major lineages of the Rhodomelaceae (Díaz-Tapia et al. 2017b).

## RESULTS

The taxonomy of several of the studied species is complex and details are provided in Appendix S1 in the Supporting Information.

### *Ophidocladus simpliciusculus*.

*Ophidocladus simpliciusculus* was collected in four out of the six world regions where it has been reported (Fig. 1a). The UPGMA analyses included 15 newly determined *rbcL* sequences and two downloaded from GenBank (Table S1). Sequences comprised four haplotypes (Fig. 1b): haplotype 1, seven

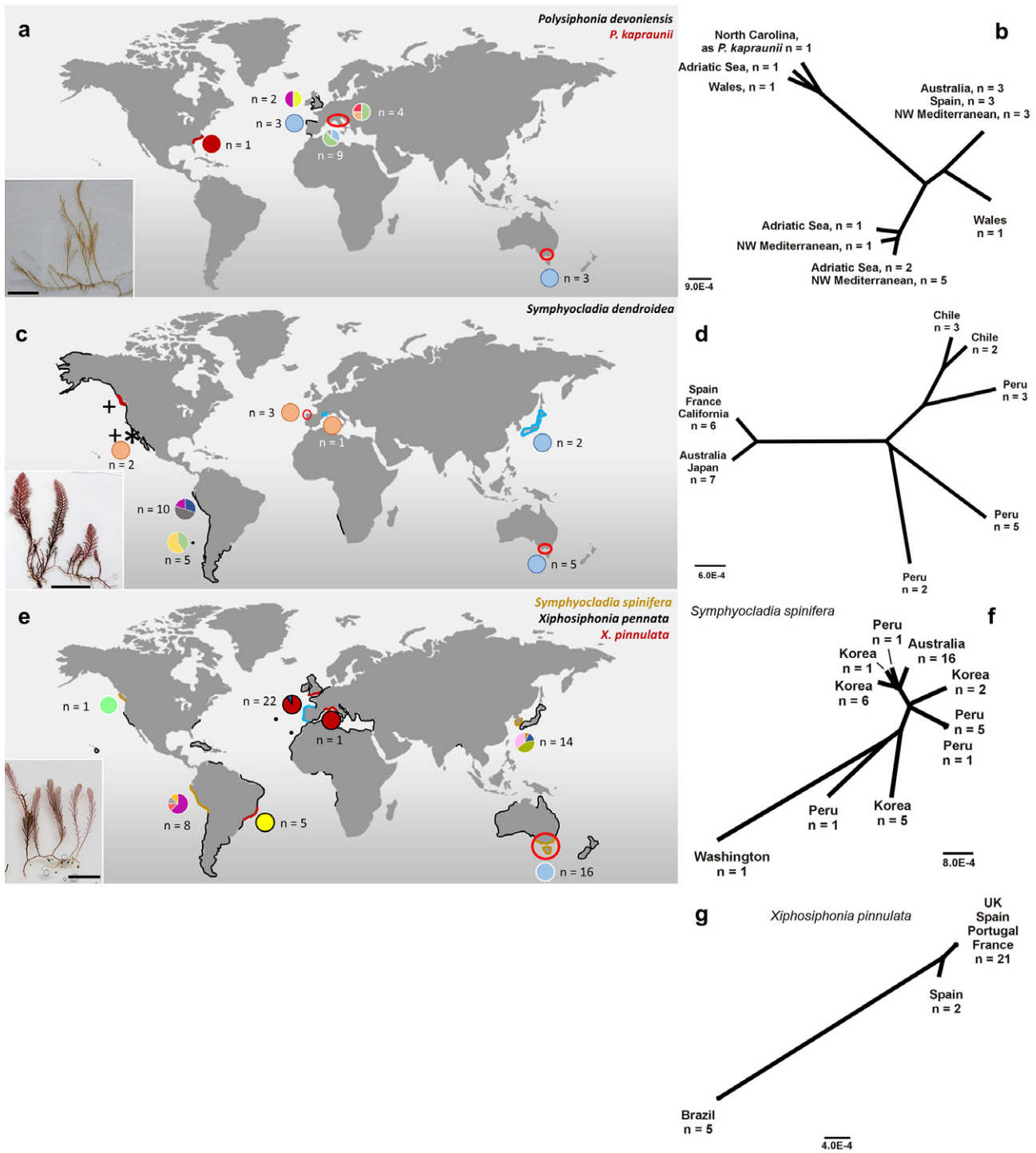


FIG. 2. Distribution and UPGMA unrooted distance phylogram based on *rbcL* sequences of (a, b) *Polysiphonia devoniensis* (as *Polysiphonia kapraunii* in North Carolina), (c, d) *Symphyocladia dendroidea* and (e, f, g) *S. spinifera*/*Xiphosiphonia pennata*/*Xiphosiphonia pinnulata*. Symbols are as in Figure 1, and pie divisions in panels a, c, and e indicate proportions of each haplotype when multiple haplotypes were present. In panel e, circles with white border correspond to *S. spinifera* and the ones with black border to *X. pinnulata*. Encircled areas marked with red color are regions where the species are here recorded for the first time. (a) Black lines represent the recorded distribution of *P. devoniensis* and red line the distribution of *P. kapraunii*. In panel c, black lines represent the recorded distribution of *S. dendroidea*, blue lines the regions where it was recorded as *S. tanakae*, red line the region where molecular data demonstrated that *S. dendroidea* 2 is present, the asterisk indicates the area where both *S. dendroidea* 2 and *S. tanakae* were reported based on molecular data, and plus symbols the regions from which sequences of *S. dendroidea* 2 are available. (e) Black lines represent the recorded distribution of *X. pennata*; yellow lines the regions where molecular data showed the presence of *S. spinifera* instead *X. pennata*; red lines regions where only *X. pinnulata* has been recorded based on molecular data and blue line the region where both *X. pinnulata* and *X. pennata* have been recorded based on molecular data. Scale bars: 6 mm in (a), 7 mm in (c), 4 mm in (e).



FIG. 3. Distribution of *Herposiphonia tenella*. Asterisks indicate the regions from which sequences are available. Scale bar: 1 mm. [Color figure can be viewed at [wileyonlinelibrary.com](http://wileyonlinelibrary.com)]

samples from Europe (Atlantic and Mediterranean); haplotype 2, six samples from Australia; haplotype 3, one sample from South Africa; and haplotype 4, three samples from Brazil. The South African sample differed by only 0.1% (1 bp) from the Australian samples, while Brazilian samples were the most divergent (up to 0.8% and 11 bp) from samples from other regions. Our results indicate that *Ophidocladus simpliciusculus* has a unique *rbcl* haplotype in each region, but it has a strong phylogeographic structure.

#### *Lophosiphonia obscura*.

*Lophosiphonia obscura* has been reported in the Atlantic and Indo-Pacific and sequences are available from Europe and Australia (Fig. 1c). Furthermore, our data set also included *Polysiphonia hemisphaerica* from Norway and *P. boldii* from Texas, USA which may be conspecific as suggested by the low *rbcl* divergence from *L. obscura* (see Appendix S1). We analyzed six newly determined *rbcl* sequences and two downloaded from GenBank for *L. obscura*, *P. hemisphaerica*, and *P. boldii* (Table S1). Four haplotypes were found (Fig. 1d): (i) four samples from Spain (Atlantic and Mediterranean) and Norway; (ii) a sample from the United Kingdom; (iii) a sample from USA; and (iv) two samples from Australia. Atlantic samples differed by 0.1%–0.2% (1–2 bp), while Australian samples were 0.7%–0.9% (8–11bp) divergent from the Atlantic samples. Our results indicate that the lineage formed by these three taxa is moderately variable in the North Atlantic, and is clearly separated from the Australian populations.

#### *Polysiphonia villum*.

Molecular data were obtained from two regions where *Polysiphonia villum* (as *P. scopulorum* var. *villum*, see Appendix S1) had previously been reported

(Fig. 1e). Furthermore, it was also sampled in Spain, the French Mediterranean, and Australia, where it is here newly recorded. The 13 sequences determined for *P. villum* and the two downloaded from GenBank (Table S1) belong to three haplotypes (Fig. 1f): (i) four samples from Australia, (ii) three samples from Brazil and 3) eight samples from the North Atlantic (North Carolina, Spain, and France). Australian samples were 0.5%–0.6% (4–7 bp) divergent from the Atlantic samples and the Brazilian sequences differed by 0.2% (2 bp) from the North Atlantic samples. Thus, *P. villum* shows a clear phylogeographic structure.

#### *Polysiphonia devoniensis*.

Our data set included samples from the previously recorded distribution in Atlantic Europe, as well as from the northwestern Mediterranean (Italy and France), the Adriatic Sea (Italy), and Victoria (Australia), from where *Polysiphonia devoniensis* is here recorded for the first time (Fig. 2a, Table S1). Furthermore, sequences of *Polysiphonia kapraunii* from North Carolina were also included in our data set (see Appendix S1). Analyses including an *rbcl* sequence of *P. kapraunii* from GenBank and 21 newly determined sequences of *Polysiphonia devoniensis* (Table S1) showed eight haplotypes (Fig. 2b). One haplotype was found in the northwestern Mediterranean, Atlantic Spain, and Australia; one occurred in the Adriatic Sea and the northwestern Mediterranean; and six haplotypes were each represented by a single sample (two from Wales, two from the Adriatic Sea, one from the northwestern Mediterranean and one from North Carolina). The North Carolina sample identified as *P. kapraunii* was 0.2%–0.3% (3–4 bp) divergent from two of the European samples (PD301 and PD2430). These

three samples differ from the others by sequence divergences of 1%–1.4% (12–18 bp), while divergence between the other five haplotypes is 0.1%–1% (1–9 bp). The lineage formed by samples assigned to *Polysiphonia devoniensis* and *P. kapraunii* has a high genetic diversity and the distribution of haplotypes lacks geographic structure.

*Symphyocladia dendroidea* complex.

Sequences of *Symphyocladia dendroidea* are available from most of the previously known distribution (British Columbia, California, Chile, Peru, Japan, and the Mediterranean). Some of these sequences were labeled as *Pterosiphonia tanakae* (see Appendix S1). Furthermore, we collected this species in a Galician marina (northwestern Spain) and in Australia (Victoria), where it is here recorded for the first time (Fig. 2c).

The *rbcL* data for *Symphyocladia dendroidea* reveal cryptic diversity in the Americas, as specimens from Peru and Chile and specimens from British Columbia (here referred as *S. dendroidea* 2) do not constitute a clade (Fig. S1 in the Supporting Information, Table S1). In addition to these regions, both were recorded in California. *Symphyocladia dendroidea* is resolved as sister to *S. parasitica* with high support, while *S. dendroidea* 2 is placed in a moderately supported clade together with *S. brevicaulis* and *S. baileyi* (Fig. S1). Molecular data show that *S. dendroidea* has a wide distribution in the Pacific and occurs in some European locations, while *S. dendroidea* 2 is apparently restricted to Pacific North America.

In total, 28 *rbcL* sequences were analyzed for *Symphyocladia dendroidea* (some sequences labeled as *S. tanakae*, see Appendix S1) including 13 newly determined and 15 downloaded from GenBank (Table S1). The UPGMA dendrogram shows seven haplotypes (Fig. 2d) of which five comprise samples from Pacific South America, one includes samples from Australia and Japan, and the other consists of samples from California and Europe. Maximum variability between South American haplotypes is 0.6% (8 bp), and sequence divergence between them and the two other clades is 0.4%–1% (3–9 bp). These levels of *rbcL* variation suggest that this entity may consist of multiple species or highly differentiated populations.

*Xiphosiphonia pennata* complex, including *X. pinnulata* and *Symphyocladia spinifera*.

*Xiphosiphonia pennata* has been reported in the Atlantic and Indo-Pacific (Fig. 2e) and this morphological species is a complex of at least three non-sister species. Their taxonomy has been resolved with the clarification of the identity of *X. pinnulata* and *S. spinifera* that have been misidentified as *X. pennata* (see Appendix S1).

At present, 39 *rbcL* sequences (16 newly determined and 23 downloaded from GenBank) are available for *Symphyocladia spinifera* from California, Pacific South America, Australia, and Korea (Fig. 2f). The UPGMA shows 10 haplotypes of which

four correspond to Korean samples, four to Peruvian samples, one to Australian samples and one to a Washingtonian sample (Fig. 2f). Sequence divergence among haplotypes is up to 0.9% (7 bp). Australian samples match the morphological concept of *Xiphosiphonia pennata*, but our molecular data reveal that none of them grouped with the European *X. pennata* but instead are mostly closely related to *S. spinifera*. Therefore, *X. pennata* should be excluded from the recorded Australian flora and replaced by *S. spinifera*. Interestingly, all the Australian samples belong to a single haplotype, which contrasts with the four haplotypes found in both Peru and Korea.

*Xiphosiphonia pinnulata* sequences were resolved as three haplotypes of which two were found in European samples and one in Brazilian samples (Fig. 2g). Sequence divergence among them is up to 0.7% (9 bp) and between the two European clades is up to 0.3% (3 bp). *Xiphosiphonia pennata* was only found in the Atlantic Iberian Peninsula. Therefore, the widely reported *X. pennata* (as *Pterosiphonia pennata*) is apparently restricted to European shores. *Xiphosiphonia pinnulata* is restricted to the Atlantic, where it has a strong phylogeographic structure with divergences that may even suggest they are separate species. *Symphyocladia spinifera* is restricted to the Pacific and it has a high genetic variability between regions and within regions in Korea and South America.

*Herposiphonia tenella* complex.

In total, 27 *rbcL* sequences were obtained for samples morphologically identified as *Herposiphonia tenella* from Europe, North America and Queensland (Australia; Fig. 3). They were analyzed together with the available *rbcL* data for the genus (15 species). The phylogeny resolved *H. tenella* in seven lineages, four from the Atlantic and three from Queensland (Fig. 4). Sequence divergence among the lineages was at least 1.9%, while divergence within them was up to 0.7%. Only two of these lineages were resolved as sisters (1.9%–2.1% sequence divergence), while the others, despite morphological similarities, were more closely related to other lineages. Thus, *H. tenella* is a large species complex that requires taxonomic revision to better understand its cryptic diversity and the distribution of the resulting new species. Its type locality is in the Mediterranean, where three of the four European lineages were collected.

## DISCUSSION

*Species complexes.* In this work we detected several complexes of non-sister species (*Xiphosiphonia pennata*, *Symphyocladia dendroidea*, and *Herposiphonia tenella*). Also, we found species-level taxa that represent monophyletic lineages containing several haplotypes that in most cases are distributed in accordance with geographic regions. They could also be classified as species complexes, as sequence

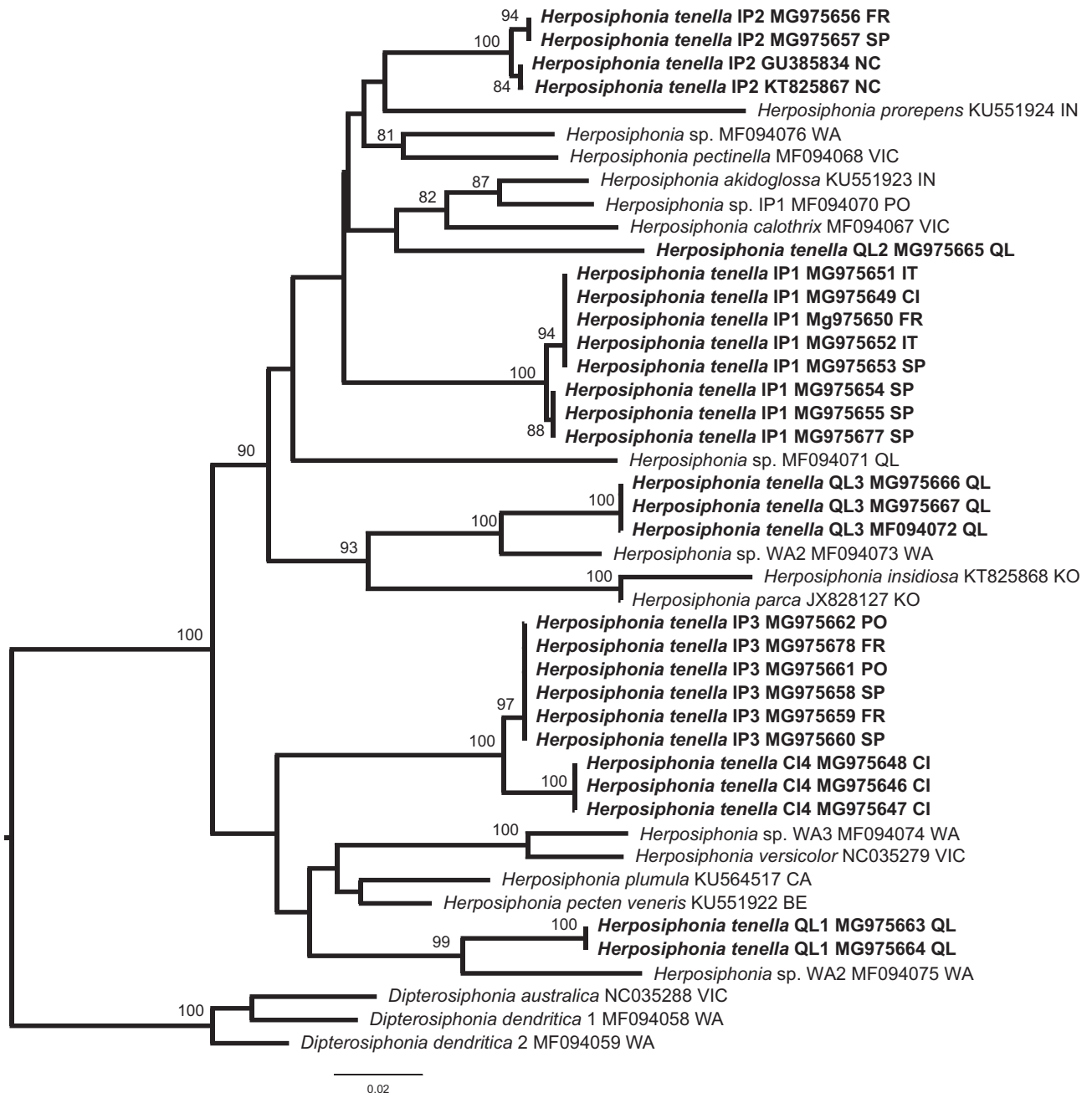


FIG. 4. RAxML tree based on *rbcL* sequences of the genus *Herposiphonia*. Samples that morphologically correspond with *H. tenella* are in bold. Bootstrap values are indicated on the nodes when >80. BE (Belize), CA (Canada), CI (Canary Islands), FR (France), IN (India), IT (Italy), KO (Korea), NC (North Carolina), PO (Portugal), QL (Queensland), SP (Spain), WA (Western Australia), VIC (Victoria).

divergences between haplotypes are often large (up to 1.4%), possible evidence for multiple species. Interpretations of genetic divergences when delineating species boundaries vary among authors. For example, *Melanothamnus harveyi/japonicus* and other closely related species have been interpreted as a single species with an intraspecific variability in the *rbcL* gene  $\leq 2.1\%$  (McIvor et al. 2001, as *Polysiphonia*) or as a species complex in which interspecific variability in the *rbcL* gene is 0.3%–0.7% (Savoie and Saunders 2015, as *Neosiphonia*). The species concept

has been hotly debated, but there is a general consensus that speciation is a process that takes place when gene flow is interrupted as a consequence of isolation of populations (Coyne et al. 1988, Leliaert et al. 2014). In the present work, assessing species boundaries was not always straightforward, and we used information based on genetic divergences, species distribution and, in one lineage, interbreeding experiments described by Rueness (1973). The first scenario we encountered consists of species with a variety of haplotypes found in distant locations.

Genetic isolation by distance seems obvious considering our data and, in some cases, where the divergences between distant populations are relatively large ( $\leq 0.9\%$ ), one might consider them different species (*Ophidocladus simpliciusculus* from Europe vs. Brazil vs. Australia/South Africa, *Lophosiphonia obscura* from the North Atlantic vs. Australia, *P. villum* from the Atlantic vs. Australia, and *X. pinnulata* from Brazil vs. Europe). However, the low number of samples in some regions or species, as well as the lack of sampling in other regions where these species were recorded or may be still unknown precludes a definitive conclusion. Perhaps the observed large sequence divergences between the lineages within these species would be less evident with larger data sets. A second scenario is similar to the former, as it consists of species with a variety of haplotypes, but in this case several haplotypes share the same distribution (*P. devoniensis*, *Symphyclocladia dendroidea*, *S. spinifera*). Thus, despite *rbcl* divergences among some haplotypes ( $\leq 1.4\%$ ) being even larger than in the previous group ( $\leq 0.9\%$ ), whether they are at present reproductively isolated and should be considered as distinct species is uncertain. Interbreeding experiments may help to clarify if these species should be considered as distinct or not. While successful reproduction may have multiple interpretations (Leliaert et al. 2014), unsuccessful reproduction indicates reproductive incompatibility. The third scenario we found in this work is represented by *L. obscura* whose eastern and western Atlantic populations have low genetic distances (0.1%–0.2%) in the *rbcl* gene, and also in the more variable *cox1* marker (0.6%–1.2%, HQ412544-5 as *P. hemisphaerica* and *P. boldii*, MF094025). Despite this, crossing experiments demonstrate that isolates from Texas and from Norway fail to produce fully fertile progeny (Rueness 1973, as *P. hemisphaerica* and *P. boldii*). This suggests that these two populations are reproductively isolated, and that divergent selection may be acting on these populations but *rbcl* and *cox1* gene sequences do not reflect this isolation (Nosil et al. 2009). These three scenarios show different evolutionary patterns even among closely related species (e.g., *P. villum* vs. *P. devoniensis*). Therefore, application of genetic distances in delineating species boundaries should be evaluated on a case by case basis. While these are very interesting issues from a taxonomic perspective, they are not the focus of this paper. From a phylogeographic point of view, whether these closely related monophyletic lineages are different species or not is of minor importance, because either way they share a common ancestor from which several genetic entities evolved.

**Phylogeographic patterns.** The paradox between expected dispersal limitation (Santelices 1990, Kinlan and Gaines 2003) and wide reported species distributions led us to hypothesize that such widely distributed species would either have strong

phylogeographic structure or were spread by humans. Our results confirmed these hypotheses and exposed a third scenario, where the morphologically defined species was in fact a complex of non-sister cryptic species.

Three of the species exhibit genetic variability with clear phylogeographic structure in Australia, and the North and South Atlantic (*Ophidocladus simpliciusculus*, *Lophosiphonia obscura* and *Polysiphonia villum*). This result is not unexpected considering that genetic divergence is promoted by the isolation among populations separated by large geographic distances (Palumbi 1994). However, the observed genetic divergence is relatively low ( $\leq 0.9\%$ ) considering that Australia and the North and South Atlantic have been separated since about 80 My (Jordan et al. 2016). Therefore, rather than this genetic divergence resulting from an 80 My old vicariant evolution, long-distance dispersal processes acting on a common ancestor and subsequent divergence into differentiated populations are invoked to explain the observed patterns. Mechanisms responsible for this long-distance dispersal are obscure considering that these species either occur in coastal lagoons/estuaries or on sand-covered rocks where buoyant macroalgae that can act as rafts are rare (Airoldi 1998, Díaz-Tapia et al. 2013a). Molecular data have provided evidence for long-distance dispersal in other red algal species but mechanisms remain unknown (Zuccarello et al. 2002a, Fraser et al. 2013). The genetic separation among geographically distant lineages may indicate that long-distance dispersal occurs at a low rate. Alternatively, density-dependent processes are involved and once a population colonizes a new region it prevents the establishment of latecomers (Waters et al. 2013). Furthermore, available data for the three species mentioned above indicate different evolutionary histories and/or dispersal paths. For instance, in *L. obscura* and *P. villum* the largest sequence divergences are between Australian and Atlantic populations, whereas in *O. simpliciusculus* the Australian haplotype is relatively close to South African and European haplotypes but the divergence across the Atlantic (Brazil vs. Europe) is much larger.

Several species showed a diversity of haplotypes sharing the same region: the Pacific *Symphyclocladia spinifera* and *S. dendroidea*, as well as the Atlantic *Polysiphonia devoniensis*. The origin of this diversity must be related to processes of isolation that led to genetic differentiation, followed by local dispersal events. As for *Ophidocladus simpliciusculus*, *Lophosiphonia obscura* and *P. villum*, dispersal mechanisms for *S. spinifera* and *P. devoniensis* are unknown. In contrast, *S. dendroidea* has been reported growing on stranded holdfasts of the floating alga *Durvillaea antarctica* (Macaya et al. 2016, López et al. 2017, 2018), which could contribute to dispersal after genetic differentiation influenced its genetic structure.



The disjunct distribution of a second group of species (*Polysiphonia devoniensis* and *Symphyclocladia dendroidea*) can be explained by human-mediated introduction events. The human transport of species from native (donor) to introduction (recipient) regions causes the rapid expansion of species' distribution and alters natural phylogeographic patterns (Straub et al. 2016). The discovery of *Polysiphonia devoniensis* in Victoria (Australia), exhibiting a single haplotype that is also present in Europe, suggests that this species has been introduced into this country from Europe, possibly Atlantic Spain or the NW Mediterranean. *Symphyclocladia dendroidea* was recorded as an introduced species in the French Mediterranean in 2005 (Boudouresque and Verlaque 2008, as *Pterosiphonia tanakae*) and our recent discovery of the same haplotype in a marina in Atlantic Spain probably represents a secondary introduction and suggests that the species is spreading in Europe via hull fouling. The presence of several genetically separated lineages of *S. dendroidea* in Pacific South America contrasts with the occurrence of a single haplotype in Japan, Australia, and California. Japan and Australia have the same haplotype, suggesting that one or both populations could be introduced. Genetic diversity of seaweeds in the introduced regions is usually either similar or reduced relative to the native area (McIvor et al. 2001, Voisin et al. 2005, Provan et al. 2008, Geoffroy et al. 2016). The finding of diverse haplotypes in the introduced region is indicative of an introduction involving several haplotypes or multiple introductions, depending on the phylogeographic structure in the native area (McIvor et al. 2001, Voisin et al. 2005, Geoffroy et al. 2016). A single haplotype of both *S. dendroidea* and *P. devoniensis* has been detected in the areas where the introduction of these species is certain, suggesting that their introduction is the result of a single event in which a single haplotype was involved. However, much more complex scenarios could explain the observed patterns and a better understanding of the phylogeographic patterns in native and introduced areas would be needed to elucidate the introduction dynamics.

The third group of species analyzed here involved species complexes of non-sister cryptic species (*Xiphosiphonia pennata* including *X. pinnulata* and *Symphyclocladia spinifera*; *S. dendroidea*; and *Herposiphonia tenella*). In both cases species found in the Atlantic and Pacific basins differ, but in addition several species were found with overlapping distributions in some regions of each basin. Therefore, the distribution of these widely reported species is much narrower than previously thought. Cryptic algal species often involve a group of morphologically similar species that are genetically differentiated, but resolve as a monophyletic group (Zuccarello et al. 2002a, Won et al. 2009, Payo et al. 2013). However, examples of non-monophyletic cryptic "species"

have also been documented in the red algae (Zuccarello et al. 2018). Morphological similarity among non-monophyletic groups of cryptic species can be explained by evolutionary convergence, morphological stasis or developmental constraints (Leliaert et al. 2014, Zuccarello et al. 2018). *Xiphosiphonia pennata*, *S. spinifera*, and *S. dendroidea* are placed in a tribe (Pterosiphonieae) with high morphological variation ranging from filiform to foliose species (Díaz-Tapia et al. 2017b). The body plan of both species is filiform, among the simplest observed in the tribe, and morphological stasis is a plausible explanation for their similarity. In the tribe Herposiphonieae all species are very similar in morphology, with limited differences in their body plans (Díaz-Tapia et al. 2017b) and the cryptic diversity in *H. tenella* might result from morphological stasis or developmental constraints.

Understanding the processes underlying phylogeographic patterns requires the study of numerous specimens from across the entire distribution of the species. In this regard, we recognize important limitations in our work that prevent us from fully elucidating causes of the observed phylogeographic patterns, leading to some tentative conclusions about the potentially introduced status of some of the analyzed populations. However, most of the species treated here are rare in all or part of their known distribution range so improving the data sets would be very difficult. For example, *Lophosiphonia obscura*, despite being widely reported, is very rare in the regions here studied: the sample from the United Kingdom used in this study is the first one collected since 1970 (Maggs and Hommersand 1993). In Spain, we found it only once in the Atlantic and once in the Mediterranean, and the species is here recorded for only the third time in Australia. Our work should thus be interpreted as one of the first attempts to understand phylogeographic patterns of widely distributed red algal species. Even though their evolutionary history is not well known, our analyses provide clear examples of (i) species with wide distributions and strong phylogeographic structure that reflects the geographical distance; (ii) species with a broad distribution that can be only explained by human-mediated transport; and (iii) species complexes in which non-monophyletic cryptic diversity has been found. This study indicates that widely distributed species are the exception in red algae, except when they have been spread by humans.

We thank Francis Bunker, Fabio Rindi, Iara Chapuis, Jan Ruess, and Max Hommersand for providing samples and Joana Costa, as well as other researchers included in Table S1, for assistance in the field. We thank Marisa Pasella for carrying out part of the molecular work. PDT acknowledges support by the postdoctoral program "Axudas de apoio á etapa de formación posdoutoral," as well as the funding program "Axudas para a consolidación e estruturación de unidades de investigación competitivas do SUG," grant GPC2015/025 (Xunta de

- Galicia). Field work in the Mediterranean Sea was funded by a grant awarded to PDT by the British Phycological Society. Part of the research presented here was funded through the Australian Biological Resources Study (ABRS), including participation in a Bush Blitz expedition, a Bush Blitz Strategic Taxonomy Grant (TTC216-03) and a National Taxonomy Research Grant (RFL213-08). Sampling in Western Australia, Queensland and Tasmania was made possible through funding from the Holsworth Wildlife Research Endowment. ECM acknowledges support by the Chilean Millennium Initiative (NC120030) grant, ESMOI (Millennium Nucleus "Ecology and Sustainable Management of Oceanic Islands").
- Airoldi, L. 1998. Roles of disturbance, sediment stress, and substratum retention on spatial dominance in algal turf. *Ecology* 79:2759–70.
- Boudouresque, C. F. & Verlaque, M. 2008. Biological pollution in the Mediterranean Sea: invasive versus introduced macrophytes. *Mar. Pollut. Bull.* 44:32–8.
- Bustamante, D. E., Won, B. Y. & Cho, T. O. 2014. *Polysiphonia dokdoensis* sp. nov. (Rhodomelaceae, Ceramiales) based on a population previously known as *Polysiphonia atlantica* sensu Kim and Lee from Korea. *Bot. Mar.* 57:281–9.
- Coyne, J. A., Orr, H. A. & Futuyma, D. J. 1988. Do we need a new species concept? *Syst. Biol.* 37:190–200.
- Destombe, C., Godin, J., Lefebvre, C., Dehorter, O. & Vernet, P. 2009. Differences in dispersal abilities of haploid and diploid spores of *Gracilaria verrucosa* (Gracilariales, Rhodophyta). *Bot. Mar.* 35:93–8.
- Díaz-Tapia, P. & Bárbara, I. 2013. Seaweeds from sand-covered rocks of the Atlantic Iberian Peninsula. Part. 1. The Rhodomelaceae (Ceramiales, Rhodophyta). *Cryptog. Algol.* 34:325–422.
- Díaz-Tapia, P., Bárbara, I., Cremades, J., Verbruggen, H. & Maggs, C. A. 2017a. Three new cryptogenic species in the tribes Polysiphonieae and Streblocladieae (Rhodomelaceae, Rhodophyta). *Phycologia* 56:605–23.
- Díaz-Tapia, P., Bárbara, I. & Díez, I. 2013a. Multi-scale spatial variability in intertidal benthic assemblages: differences between sand-free and sand-covered rocky habitats. *Estuar. Coast. Shelf Sci.* 133:97–108.
- Díaz-Tapia, P., Kim, M. S., Secilla, A., Bárbara, I. & Cremades, J. 2013b. Taxonomic reassessment of *Polysiphonia foetidissima* (Rhodomelaceae, Rhodophyta) and similar species, including *P. schneideri*, a newly introduced species in Europe. *Eur. J. Phycol.* 48:345–62.
- Díaz-Tapia, P., Maggs, C. A., West, J. A. & Verbruggen, H. 2017b. Analysis of chloroplast genomes and a supermatrix inform reclassification of the Rhodomelaceae (Rhodophyta). *J. Phycol.* 53:920–37.
- Fraser, C. I., Nikula, R., Spencer, H. G. & Waters, J. M. 2009. Kelp genes reveal effects of subantarctic sea ice during the Last Glacial Maximum. *Proc. Natl. Acad. Sci. USA* 106:3249–53.
- Fraser, C. I., Zuccarello, G. C., Spencer, H. G., Salvatore, L. C., Garcia, G. R. & Waters, J. M. 2013. Genetic affinities between trans-oceanic populations of non-buoyant macroalgae in the high latitudes of the southern hemisphere. *PLoS ONE* 8: e69138.
- Freshwater, D. W. & Rueness, J. 1994. Phylogenetic relationships of some European *Gelidium* (Gelidiales, Rhodophyta) species based upon *rbcL* nucleotide sequence analysis. *Phycologia* 33:187–94.
- Geoffroy, A., Destombe, C., Kim, B., Mauger, S., Raffo, M. P., Kim, M. S. & Le Gall, L. 2016. Patterns of genetic diversity of the cryptogenic red alga *Polysiphonia morrowii* (Ceramiales, Rhodophyta) suggest multiple origins of the Atlantic populations. *Ecol. Evol.* 6:5635–47.
- Guiry, M. D. & Guiry, G. M. 2018. *AlgaeBase*. World-Wide Electronic Publication, National University of Ireland, Galway, UK. Available at: <http://www.algaebase.org> (accessed 6 January 2018).
- Jackson, J. B. C. 1974. Biogeographic consequences of eurytopy and stenotopy among marine bivalves and their evolutionary significance. *Amer. Nat.* 108:541–60.
- Jordan, S. M. R., Barraclough, T. G. & Rosindell, J. 2016. Quantifying the effects of the break up of Pangaea on global terrestrial diversification with neutral theory. *Phil. Trans. R. Soc. B* 371:20150221.
- Kearse, M., Moir, R., Wilson, A., Stones-Havas, S., Cheung, M., Sturrock, S., Buxton, S. et al. 2012. Geneious Basic: an integrated and extendable desktop software platform for the organization and analysis of sequence data. *Bioinformatics* 28:1647–9.
- Kinlan, B. P. & Gaines, S. D. 2003. Propagule dispersal in marine and terrestrial environments: a community perspective. *Ecology* 84:2007–20.
- Leliaert, F., Verbruggen, H., Vanormelingen, P., Steen, F., López-Bautista, J. M., Zuccarello, G. C. & De Clerck, O. 2014. DNA based species delimitation in algae. *Eur. J. Phycol.* 49:179–96.
- López, B. A., Macaya, E. C., Rivadeneira, M., Tala, F., Tellier, F. & Thiel, M. 2018. Epibiont communities on stranded kelp rafts of *Durvillaea antarctica* (Fueales, Phaeophyceae) – do positive interactions facilitate range extensions? *J. Biogeogr.* 45:1833–45.
- López, B. A., Tellier, F., Retamal-Alarcón, J. C., Pérez-Araneda, K., Fierro, A. O., Macaya, E. C., Tala, F. & Thiel, M. 2017. Phylogeography of two intertidal seaweeds, *Gelidium linguatum* and *G. rex* (Rhodophyta: Gelidiales), along the South East Pacific: patterns explained by rafting dispersal? *Mar. Biol.* 164:188.
- Macaya, E. C., López, B., Tala, F., Tellier, F. & Thiel, M. 2016. Float and raft: role of buoyant seaweeds in the phylogeography and genetic structure of non-buoyant associated flora. In Hu, Z. M. & Fraser, C. I. [Eds.] *Seaweed Phylogeography*. Springer, Dordrecht, pp. 97–130.
- Macaya, E. C. & Zuccarello, G. C. 2010. Genetic structure of the giant kelp *Macrocystis pyrifera* along the southeastern Pacific. *Mar. Ecol. Prog. Ser.* 420:103–12.
- Maggs, C. A. & Hommersand, M. H. 1993. *Seaweeds of the British Isles. Volume 1. Rhodophyta. Part 3A. Ceramiales*. HMSO, London, 444 pp.
- Mamoozadeh, N. R. & Freshwater, D. W. 2011. Taxonomic notes on Caribbean *Neosiphonia* and *Polysiphonia* (Ceramiales, Florideophyceae): five species from Florida, USA and Mexico. *Bot. Mar.* 54:269–92.
- McIvor, L., Maggs, C. A., Provan, J. & Stanhope, M. J. 2001. *rbcL* sequences reveal multiple cryptic introductions of the Japanese red alga *Polysiphonia harveyi*. *Mol. Ecol.* 10:911–9.
- Nosil, P., Funk, D. J. & Ortiz-Barrientos, D. 2009. Divergent selection and heterogeneous genomic divergence. *Molec. Ecol.* 18:375–402.
- Palumbi, S. R. 1994. Genetic divergence, reproductive isolation, and marine speciation. *Annu. Rev. Ecol. Syst.* 25:547–72.
- Payo, D. A., Leliaert, F., Verbruggen, H., D'hondt, S., Calumpo, H. P. & De Clerck, O. 2013. Extensive cryptic species diversity and fine-scale endemism in the marine red alga *Portieria* in the Philippines. *Proc. R. Soc. Lond. B Biol. Sci.* 280:20122660.
- Provan, J., Booth, D., Todd, N. P., Beatty, G. E. & Maggs, C. A. 2008. Tracking biological invasions in space and time: elucidating the invasive history of the green alga *Codium fragile* using old DNA. *Divers. Distributions* 14:343–54.
- Riginos, C., Douglas, K. E., Jin, Y., Shanahan, D. F. & Trembl, E. A. 2011. Effects of geography and life history traits on genetic differentiation in benthic marine fishes. *Ecography* 34:566–75.
- Rueness, J. 1973. Speciation in *Polysiphonia* (Rhodophyceae, Ceramiales) in view of hybridization experiments: *P. hemisphaerica* and *P. boldii*. *Phycologia* 12:107–9.
- Santelices, B. 1990. Patterns of reproduction, dispersal and recruitment in seaweeds. *Oceanogr. Mar. Biol. Ann. Rev.* 28:177–276.

- Saunders, G. W. & McDevit, D. C. 2012. Methods for DNA barcoding photosynthetic protists emphasizing the macroalgae and diatoms. In Kress, W. & Erickson, D. [Eds.] *DNA Barcodes. Methods in Molecular Biology (Methods and Protocols)*. Humana Press, Totowa, New Jersey, pp. 207–22.
- Saunders, G. W. & Moore, T. E. 2013. Refinements for the amplification and sequencing of red algal DNA barcode and Red-ToL phylogenetic markers: a summary of current primers, profiles and strategies. *Algae* 28:31–43.
- Savoie, A. M. & Saunders, G. W. 2015. Evidence for the introduction of the Asian red alga *Neosiphonia japonica* and its introgression with *Neosiphonia harveyi* (Ceramiaceae, Rhodophyta) in the Northwest Atlantic. *Mol. Ecol.* 24:5927–37.
- Savoie, A. M. & Saunders, G. W. 2016. A molecular phylogenetic and DNA barcode assessment of the tribe Pterosiphonieae (Ceramiaceae, Rhodophyta) emphasizing the Northeast Pacific. *Botany* 94:917–39.
- Schneider, C. W., Quach, P. K. & Lane, C. E. 2017. A case for true morphological crypsis: Pacific *Dasya anastomosans* and Atlantic *D. cryptica* sp. nov. (Dasyaceae, Rhodophyta). *Phycologia* 56:359–68.
- Stamatakis, A. 2014. RAxML version 8: a tool for phylogenetic analysis and post-analysis of large phylogenies. *Bioinformatics* 30:1312–3.
- Straub, S. C., Thomsen, M. S. & Wernberg, T. 2016. The dynamic biogeography of the anthropocene: the speed of recent range shifts in seaweeds. In Hu, Z.-M. & Fraser, C. [Eds.] *Seaweed Phylogeography*. Springer, Amsterdam, pp. 63–93.
- Thomsen, M. S., Wernberg, T., South, P. M. & Schiel, D. R. 2016. Non-native seaweeds drive changes in marine coastal communities around the world. In Hu, Z. M. & Fraser, C. I. [Eds.] *Seaweed Phylogeography*. Springer, Dordrecht, pp. 147–85.
- Verbruggen, H. 2014. Morphological complexity, plasticity, and species diagnosability in the application of old species names in DNA-based taxonomies. *J. Phycol.* 50:26–31.
- Voisin, M., Engel, C. R. & Viard, F. 2005. Differential shuffling of native genetic diversity across introduced regions in a brown alga: aquaculture vs. maritime traffic effects. *Proc. Natl. Acad. Sci. USA* 102:5432–7.
- Waters, J. M., Fraser, C. I. & Hewitt, G. M. 2013. Founder takes all: density-dependent processes structure biodiversity. *Trends Ecol. Evol.* 28:78–85.
- Williams, S. L. & Smith, J. E. 2007. A global review of the distribution, taxonomy, and impacts of introduced seaweeds. *Annu. Rev. Ecol. Syst.* 38:327–59.
- Womersley, H. B. S. 2003. *The Marine Benthic Flora of Southern Australia - Part IIID Ceramiaceae - Delesseriaceae, Sarcmeniaceae, Rhodomelaceae*. Australian Biological Resources Study and State Herbarium of South Australia, Canberra and Adelaide, 533 pp.
- Won, B. Y., Cho, T. O. & Fredericq, S. 2009. Morphological and molecular characterization of species of the genus *Centroceras* (Ceramiaceae, Ceramiales), including two new species. *J. Phycol.* 45:227–50.
- Zuccarello, G. C., Sandercock, B. & West, J. A. 2002a. Diversity within red algal species: variation in world-wide samples of *Spyridia filamentosa* (Ceramiaceae) and *Murrayella pericladus* (Rhodomelaceae) using DNA markers and breeding studies. *Eur. J. Phycol.* 37:403–18.
- Zuccarello, G. C. & West, J. 2003. Multiple cryptic species: molecular diversity and reproductive isolation in the *Bostrychia radicans*/*B. moritziana* complex (Rhodomelaceae, Rhodophyta) with focus on North American isolates. *J. Phycol.* 39:948–59.
- Zuccarello, G. C., West, J. A. & Kamiya, M. 2018. Non-monophyly of *Bostrychia simpliciuscula* (Ceramiaceae, Rhodophyta): multiple species with very similar morphologies, a revised taxonomy of cryptic species. *Phycological Res.* 66:100–7.
- Zuccarello, G., West, J. & King, R. 1999. Evolutionary divergence in the *Bostrychia moritziana*/*B. radicans* complex (Rhodomelaceae, Rhodophyta): molecular and hybridization data. *Phycologia* 38:234–44.
- Zuccarello, G. C., West, J. & Rueness, J. 2002b. Phylogeography of the cosmopolitan red alga *Caulacanthus ustulatus* (Caulacanthaceae, Gigartinales). *Phycol. Res.* 50:163–72.

### Supporting Information

Additional Supporting Information may be found in the online version of this article at the publisher's web site:

**Figure S1.** RAxML tree based on *rbcl* sequences of the genus *Symphyclocladia*. *S. dendroidea*, and *S. dendroidea* 2 are marked in bold. Bootstrap values are indicated on the nodes when >80. AU (Australia), BC (British Columbia), CL (California), CH (Chile), EU (Europe), JA (Japan), PE (Peru).

**Table S1.** GenBank accession numbers of the *rbcl* sequences included in the UPGMA and phylogenetic analysis.

**Appendix S1.** Taxonomic notes.